

# AI and Big Data Spatial

Highlighted Indonesian GIS Market  
towards Industry 4.0

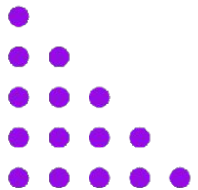
**Soraya Fitra Aulia**

Chief Marketing Officer  
Bhumi Varta Technology



# Our Vision

“To be **world class geospatial** technology provider in Indonesia”



# Why Indonesia need their own map



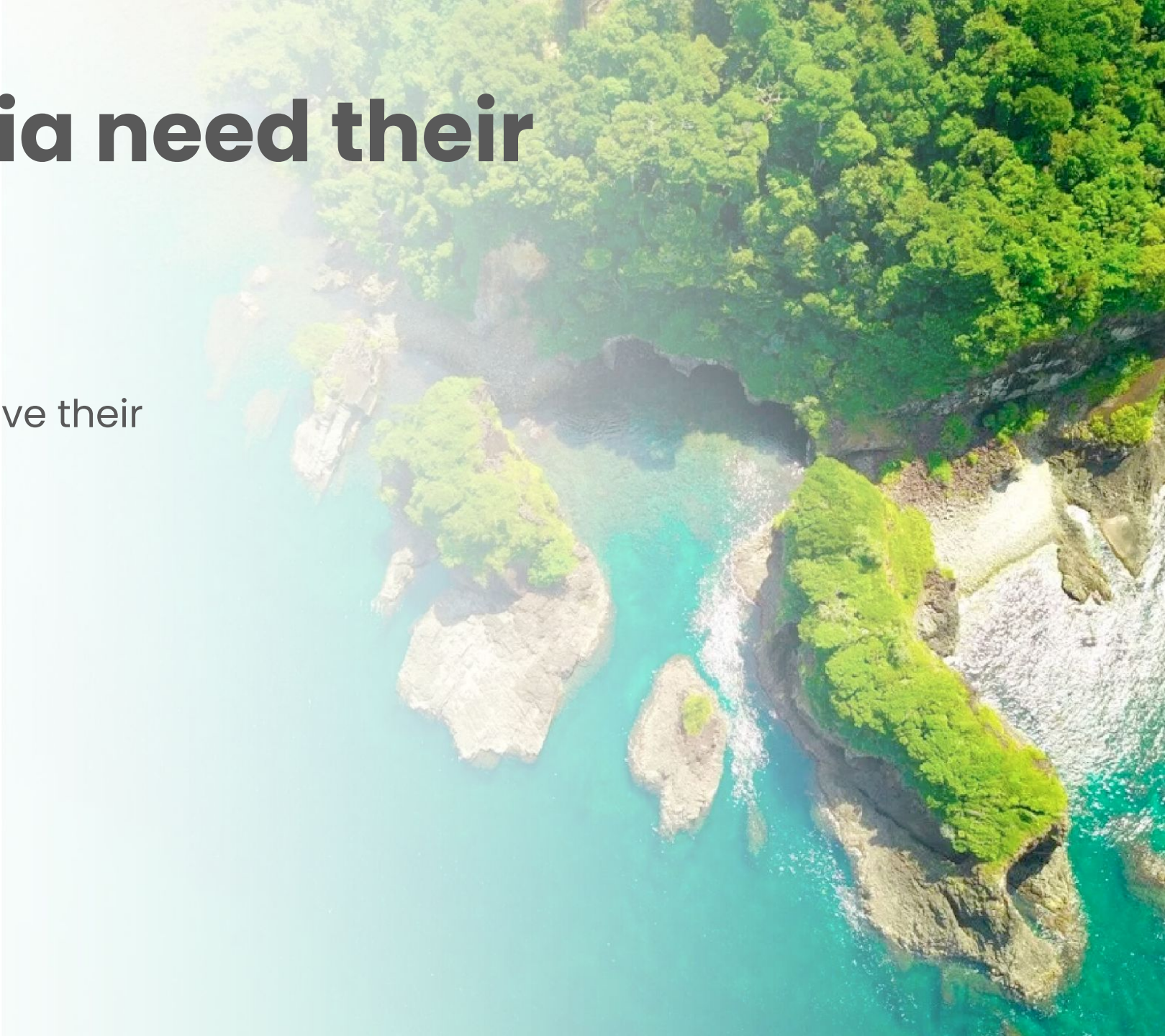
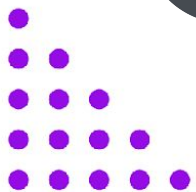
Indonesia doesn't have their own basemap



Data independence



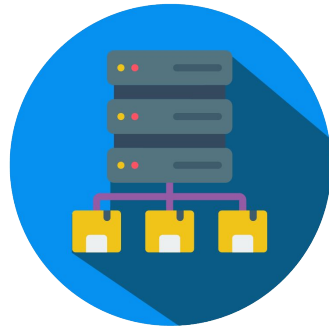
National security



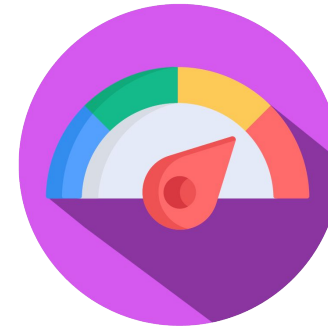
# Why big data spatial?



Awareness



Massive Data

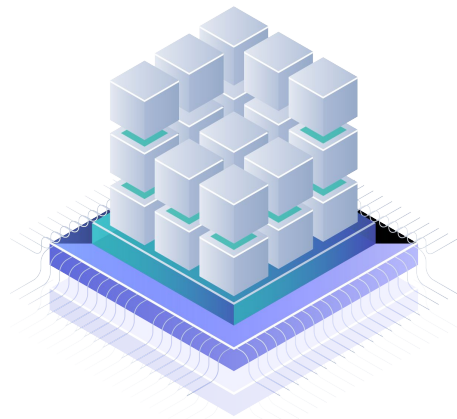


Performance

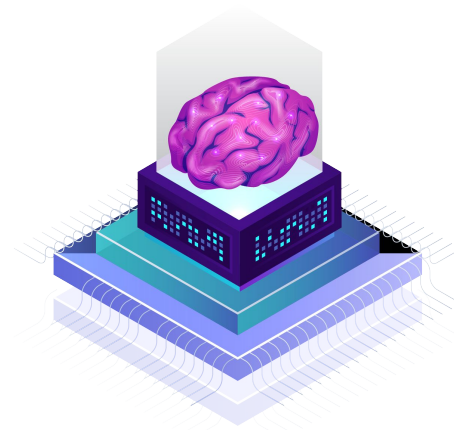
A background image of two hands shaking, overlaid with a semi-transparent purple gradient. The hands are positioned centrally, with one hand appearing to be in a suit sleeve and the other in a checkered shirt sleeve. The overall tone is professional and collaborative.

# Partnership





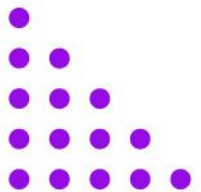
Big Data



Artificial Intelligence



Cloud GIS



# Working Together





# **BSSN Project**

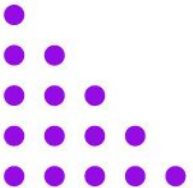
(State Cyber and Code Agency)

## **Background :**

Foreign basemap issue

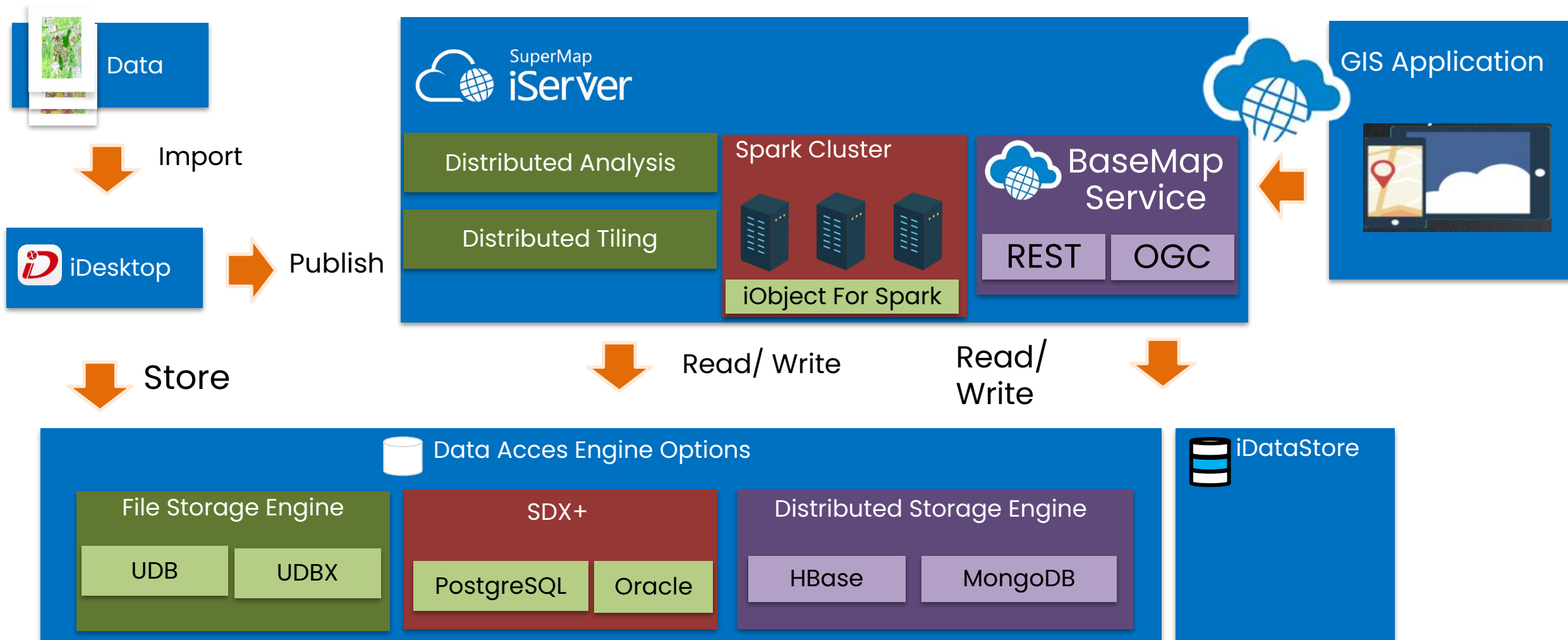
Cyber espionage

Cloud risk





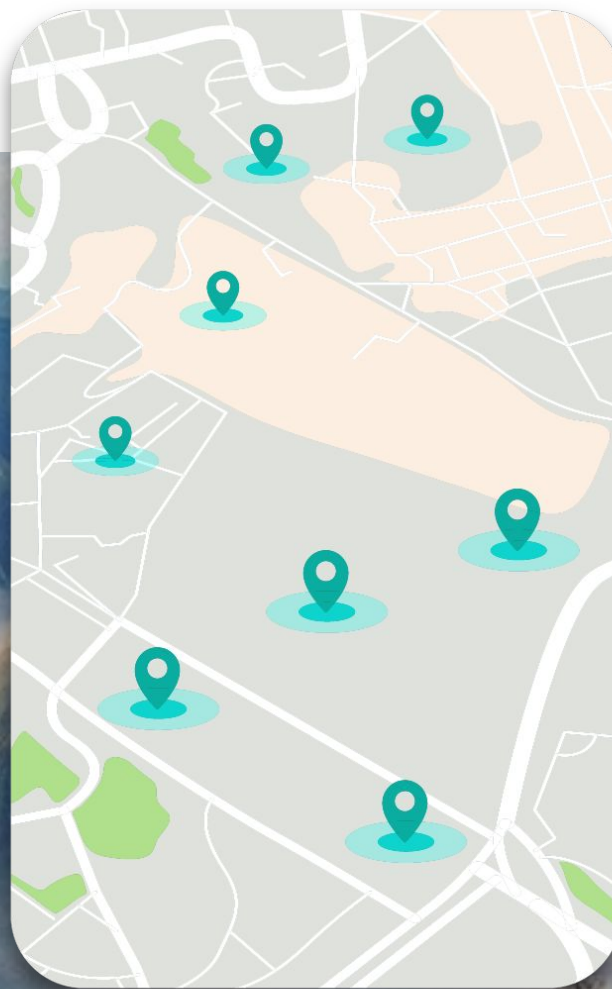
# SuperMap Configuration – Basemap API



# LOKASI Maps

Experience Indonesia from local perspective

Light Map



Dark Map

